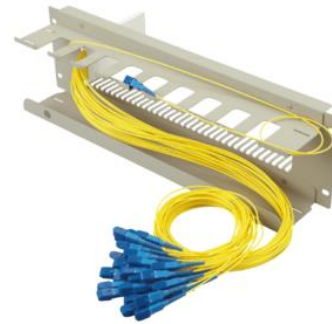


## Optical Splitter Module, Cassette Type with 2 mm Cordage FSC116 Series



1x32 Splitter Module



Implementation Example  
(Chassis and Modules)

### Features

- No connector adapter on the panel makes compact and high density modules.
- Comparing to patch cord connections with fusion splice, there is less connection, resulting in low loss.
- It can be installed in blank spaces in housing or on indoor walls.

### FSC116 Series Module Lineup

Model Number	Input/Output Type	Number of ports / Number of circuits	Dimensions	Number of Occupied Slots
FSC116-1x2-SC	Optical cord with SC connector (Ø 2 mm, Standard Length 1.5 m)	1 input / 2 output	W 9.2 x H 65 x D 130 mm	1
FSC116-1x4-SC		1 input / 4 output		
FSC116-1x8-SC		1 input / 8 output		
FSC116-1x16-SC		1 input / 16 output		
FSC116-1x32-SC		1 input / 32 output		
FSC116-1x64-SC		1 input / 64 output	W 13.2 x H 65 x D 130 mm	2

### Chassis for FSC116

Chassis for FSC116	
Capacity	36 slots
Dimensions	W 483 x H 133 x D 114 mm (19 inch rack 3U)

### Splitter Module Specifications

	1 x 2	1 x 4	1 x 8	1 x 16	1 x 32
Wavelength	1310 nm and 1550 nm				
Insertion Loss	≤ 4.3 dB	≤ 8.0 dB	≤ 11.6 dB	≤ 14.9 dB	≤ 18.4 dB
Insertion Loss Uniformity (*1)	≤ 0.9 dB	≤ 0.8 dB	≤ 1.0 dB	≤ 1.5 dB	≤ 2.0 dB
Return Loss	≥ 50 dB (UPC polishing) / ≥ 50 dB (APC polishing)				

\*1 Loss uniformity in the table does not include input/output connector loss.



Contact us