

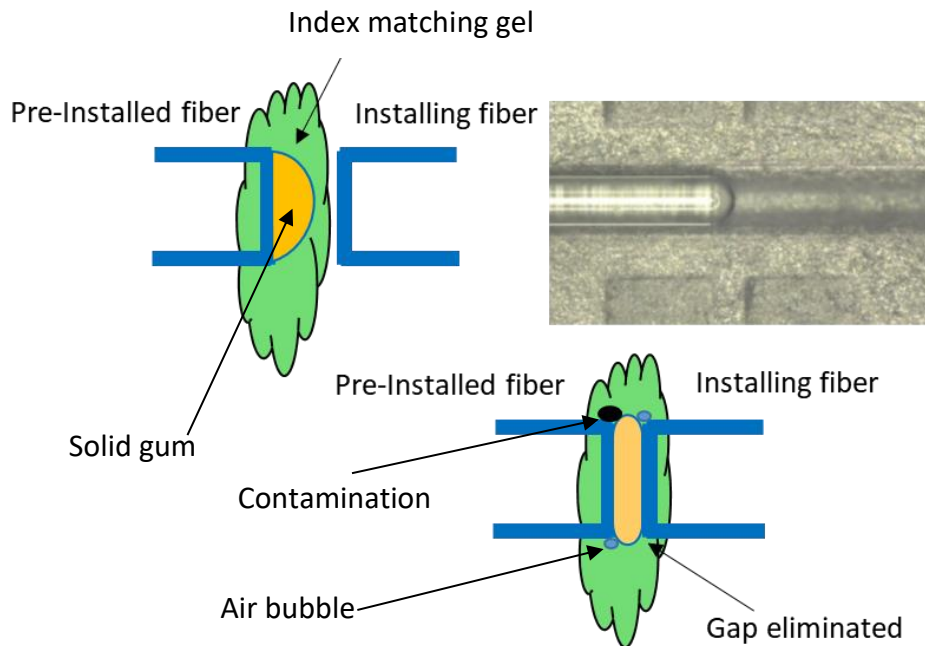
FAST™-Plus Connector

FAST™-Plus introduces a special cleave tool, maintenance free cleaver and a new type of index matching material, called 'solid gum' which is combined with the existing index matching gel.

Due to the blade design and operation, the maintenance free cleaver produces a highly repeatable and high-quality fibre cleave condition which enables an exceptional 'first time pass' connection; meaning an OPEX reduction in customer site revisits. Due to the fact Fujikura supply the maintenance free cleaver as a pre-packaged accessory with every box of FAST™-PLUS; the CAPEX normally associated with the use of a high precision cleave tool is therefore completely negated.

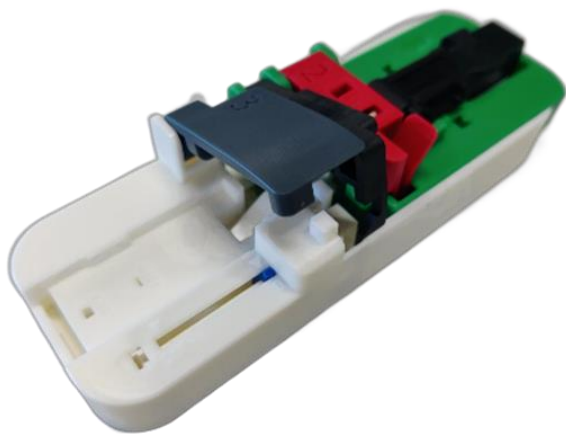
In conclusion, the FAST™ PLUS product range will benefit operators in their FTTH networks builds, especially in their access network where speed, accuracy and repeatable good results matter.

Hybrid Matching material



FAST™-Plus connector comes with a new type of index matching material, called 'solid gum' which is combined with the existing index matching gel. This technology fills tiny gaps between the pre-installed fiber and the installing fiber. On top of that, it prevents air bubbles and contaminations from moving.

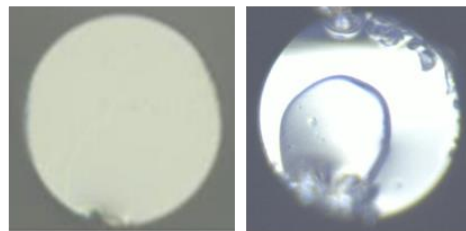
Maintenance-Free Cleaver



Features

- Complementary, comes with every 100 connectors
- No cleaver investment needed, CAPEX reduction
- Easy to operate
- Every cleave is a good cleave

Fibre end face



Good cleave

Bad cleave

Specifications

Applicable fiber/cord	0.25mm fiber (240~265μm), 0.9mm fiber (850~950μm), 2mm cord, 3mm cord				
Connector	SC, LC				
Fiber	SM *1		MM(OM1)*2	MM(OM2)*3	MM(OM3)*4
Polishing	UPC	APC	PC		
Housing color	Blue	Green	Beige	Black	Aqua
Insertion loss*5	≤0.5 dB	≤0.6 dB	≤0.4 dB		
Return loss*5,6	≥45 dB (Typical 50dB)	≥60 dB (Typical 65dB)	-		

*1 : SM ITU-T G. 625D, ITU-T G.657.A1. (ITU-T G.657.A2 type is also available, please contact with us.)

*2 : GI62.5/125, IEC60793-2-10A1b, *3 : GI50/125, IEC60793-2-10A1a.1, *4 : GI50/125, IEC60793-2-10A1a.2,

*5 : with reference connector, SM@1310, 1550nm, MM@850, 1310nm

Ordering Information

Fiber	Polishing	SC	LC
SM	UPC	FAST-SC-PLUS-UPC-A1-ALL	FAST-LC-PLUS-UPC-A1-ALL
	APC	FAST-SC-PLUS-APC-A1-ALL	FAST-LC-PLUS-APC-A1-ALL
MM(OM1)	PC	FAST-SC-PLUS-GI6-ALL	FAST-LC-PLUS-GI6-ALL
MM(OM2)	PC	FAST-SC-PLUS-GI5-ALL	FAST-LC-PLUS-GI5-ALL
MM(OM3)	PC	FAST-SC-PLUS-10G-ALL	FAST-LC-PLUS-10G-ALL