

Optical Patch Panel and Connector Module

Versatile Deployment and Easy Integration

- Comprehensive Module Deployment: Suitable for various areas, including main distribution for networking.
- Diverse Range of Options: Choose from modular types to adapter panel types for optimal customization.
- Efficient and Reliable Systems: Plug-and-play connections ensure quick, easy installation and reliable performance.
- Seamless Integration: Compatible with various trunk cables and patch cords for flexible and scalable network solutions. Feel free to combine them with various trunk cables and patch cords.

Patch Panel Chassis & Modules



FBC514P-1U



FBC514M-24LC-SM



FBC514MA-2MPO

Features

Versatile and High-Density Fiber Optic Solutions

- High-Density Mounting: Our modules are designed for high-density mounting in the chassis, ensuring efficient use of space and easy insertion and removal of connectors.
- Flexible Connectivity: The trunk cable features a multi-fiber MPO connector, with options to choose LC or SC connectors on the patch cord side for versatile connectivity.
- Dual Cabling Support: Each module supports both type A and type B cabling, providing flexibility and compatibility with various cabling standards.

Patch Panel Chassis

FBC514P-[]	1U	2U	4U
Installation Type	19 inch Rack (EIA Standard)		
Configuration	Connector + (Module) + Connector		
Cable Entry	Rear Side (Right and Left)		
Number of Cables	Max. 6	Max. 6	Max. 12
Number of Modules	Max. 3	Max. 6	Max. 12
Color	Black		
Dimensions (mm)	W 482.6 x H 43.7 x D 360	W 482.6 x H 88.1 x D 360	W 482.6 x H 177 x D 400



Contact us

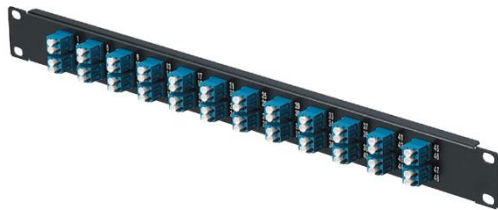
Module

FBC514M-[]	24LC-SM	24LC-MM	24LC-LM
Connector Type	LC Duplex: 12 pcs, MPO (Male): 2 pcs		
Insertion Loss (dB)	Max. 1.3	Max. 0.9	Max. 0.5

FBC514M-[]	12SC-SM	12SC-MM	12SC-LM
Connector Type	SC Duplex: 6 pcs, MPO (Male): 1 pc		
Insertion Loss (dB)	Max. 1.3	Max. 0.9	Max. 0.5

FBC514M-[]	2MPO
Connector Type	MPO: 2 pcs

Adapter Panel & Cord Storage Tray



FBC514A-48LC-BL



FBC514T-02

Features

- Utilizes a combination of adapter panel and cord storage tray.
- Supports LC, SC, and MPO connectors.

Adapter Panel

FBC514M-[]	48LC-aa	24SC-aa	12MPO
Connector Type	19 inch Rack (EIA Standard)		
Insertion Loss (dB)	LC Duplex: 24 pcs	SC Duplex: 12 pcs	MPO: 12 pcs
Color	Black		
Dimensions (mm)	W 482.6 x H 43.7 x D 10 (not including adapter)		

Cord Storage Tray

FBC514T-[]	02
Installation Type	19 inch Rack (EIA Standard)
Cable Entry	Front, Rear, Right and Left: 2 each (8 in total)
Color	Black
Dimensions (mm)	W 482.6 x H 43.7 x D 360



Contact us